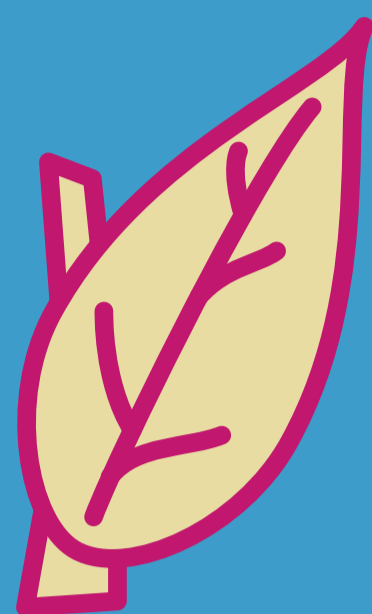


The Scholarship Gardening Kit

What do you need to grow a research culture?



Planting

A fund with a related procedure for allocating seed money to staff scholarly projects.

A dedicated role/someone with dedicated time to nurture staff scholarship, giving advice on how to frame work which is already being done as research.

Management and institutional support (in policy and practice); the creation of a cycle which links to appraisal and peer observation.



Growth

Information: CPD sessions about scholarship; what it is; how to access resources and mentoring; how to put together a presentation

A forum to disseminate internally; a 'place of representation' (see Research Café pack)

Rooting research in a community of practice, for support, advice and inspiration



Propagation

An online space - information about what people are doing, sharing practice, e.g. a blog, e-bulletin, examples of abstracts.

Developing different kinds of internal dissemination events; subject-specific Research Cafés, discussion groups, CPD training.

Presentation at external conferences; recognition by external bodies; opportunities to work externally.